

# ACCU-Sharp Spin/Relief Grinder



*The Fast And Easy Choice  
For Productivity, Flexibility, Quality, and More!*



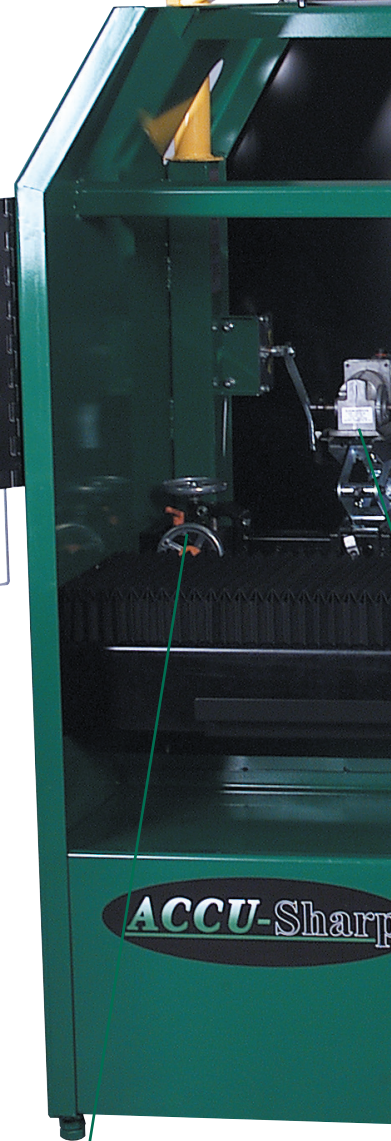
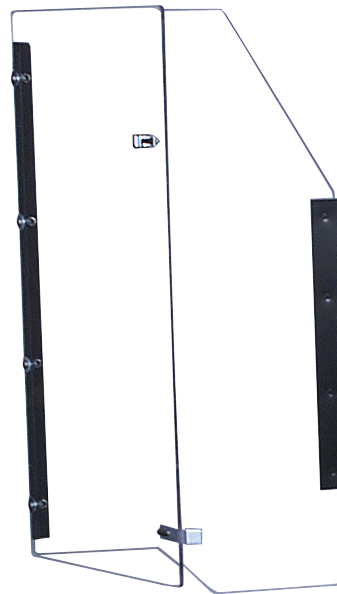


# ACCU-Sharp Spin/Relief Grinder

Foley United, the world leader in Reel Grinding Equipment since 1934, brings you the most economical solution for all your spin and relief grinding needs. Designed for optimum operator safety and ease of use, this machine is the best combination of features and economy. The Accu-Sharp utilizes the proven patented "auto-index" relief system design that is now used on all Accu-series reel grinders. This grinder is easy to set-up, simple to operate and is capable of reproducing the specifications that all the cutting head manufacturers advocate. The Accu-Sharp incorporates an all new enclosure design, one of the most sought after features in the market place, together with outstanding economy.

The hands-free relief process has not only revolutionized the ease of relief grinding, but has given the Superintendents and Technicians more options. With only a minor transition from the spin to relief process, the "auto-index" relief system allows the operator to perform other tasks while the machine does the work. Foley United's advanced technology has made this once labor intensive relief process one that requires very little extra effort, and is safe and efficient.

The easy to use Accu-Sharp dial indicator alignment system provides accuracy and brings your reels back to a "like-new" cylindrical shape, which minimizes potential issues with the aftercut appearance that can be common with tapered cutting heads. In addition, for a superior quality of cut, the Accu-Sharp is capable of meeting all recommended grinding specifications, and provides the flexibility that Superintendents look for. This machine works well in a "Spin grind only" maintenance program and is fully capable of reconditioning your reels to the manufacturer's specifications.



**Complete Safety Guarding Enclosure** assures the utmost in safety yet provides ease of use for set-up and operations.



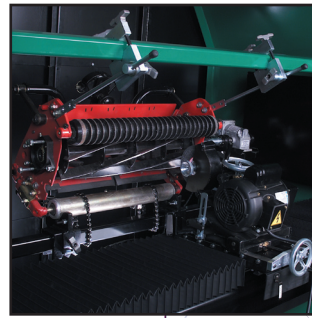
**The Rear Door Features Detachable Panels** to accommodate walking greens mowers while maintaining the integrity of the safety enclosure.



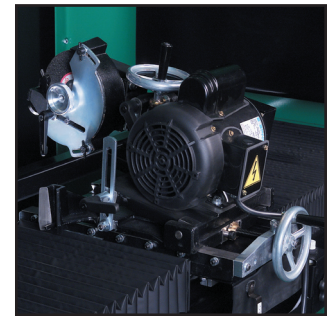
**Positive, Vertical and Horizontal Reel Adjustments** allows for easy alignment of the reel in the machine so the carriage travels perfectly parallel to reel.



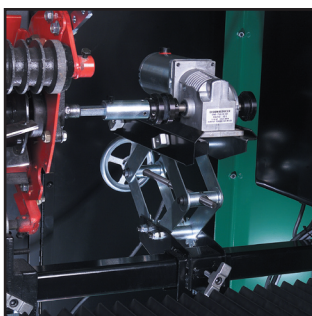
**Adjustable Reel Clamping Mechanisms:** Dual V-blocks on a rear bar allows for easy placement of the cutting head, as overhead arms and chain vice clamps rigidly secure the reel.



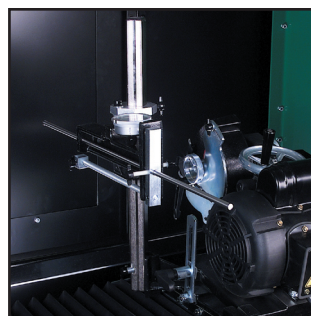
**Accessible Control Panel** with independent switches for grinding motor, carriage traverse with variable speed control, spin drive with variable speed control, spin/relief selector, variable torque for the "automatic-index" relief process, and a safety stop button.



**Single Point Infeed and a Patented Relief Indexing System** allows for exact positioning of the grinding wheel and calibrated metal removal. The detachable "Auto-Index" relief finger assembly makes the transition from spin to relief easy and efficient.



**Independently Controlled, Reversible Variable Spin Drive** provides optimum grinding performance, while the adjustable scissor jack allows for easy positioning of the quick disconnect spin drive coupler.

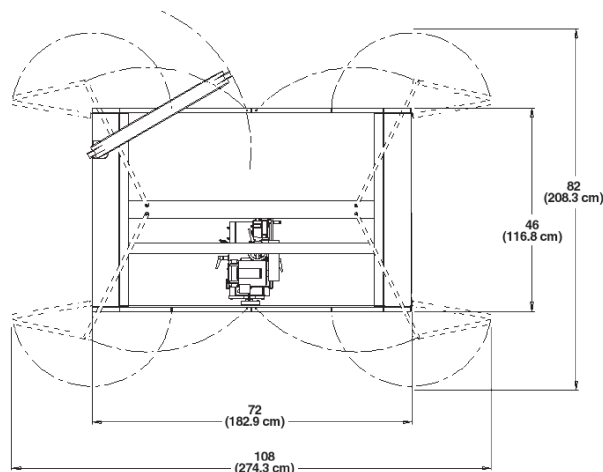
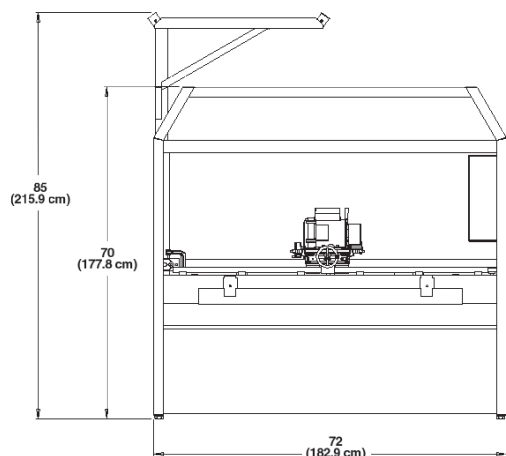


**Dial Indicator Set-Up Gauge** aligns reels within accuracy of .001", establishing the cylindrical quality of the reel before grinding.



**Maintenance Free Electro-Magnetic Traversing Switches** are easily adjustable to control the travel length of the grinding carriage.

# ACCU-Sharp Spin/Relief Grinder



## Specifications

Weight . . . . .1350 pounds (612kg)  
Width . . . . .108" (274cm)  
Depth . . . . .82" (208cm)  
Height . . . . .85" (216cm)  
Power . . . . .115v, 50/60 cycle, single phase  
Reel Lift . . . . .400 pound (180kg) Capacity  
Grinding Wheel . . . 6" x 3/4" straight (152mm x 19mm) Spin wheel  
                              6" x 3/8" straight (152mm x 9.5mm) Relief wheel  
Grinder Motor . . . . 3/4 HP fully rated 115V, 50/60 cycle, single phase, totally enclosed motor  
                              operating at 2850/3450 rpm  
Spin Motor . . . . .1/4 HP Variable speed DC Motor  
Carriage Travel . . . .44" (112cm)

## Standard Features

- 6" x 3/4" Straight grinding wheel for spin grinding
- 6" x 3/8" Straight grinding wheel for relief grinding
- Quick disconnect Patented "Auto-Index" relief mechanism
- Dial Indicator Alignment Gauge for proper set-up
- Centers for reel or bedknife holding
- Upper mower support holding rods with extensions
- Dust collector trough
- Analytically engineered, welded steel frame

## Optional Equipment

- Bedknife Grinding Kit
- Walking Greensmower Bracket
- Step down Transformer (220v/115v)
- Special centers kit
- Set-up gauge extension rod
- Ground drive mounting adapters



*Setting the Standard with the  
World's Most Valued Grinders.*

A Division of Foley-Belsaw  
River Falls, Wisconsin 54022  
**[www.foleyunited.com](http://www.foleyunited.com)**

**Distributed By:**